



# GMT MONTHLY MEMBERSHIP PROGRESS REPORT

Results as of: 5/31/2017

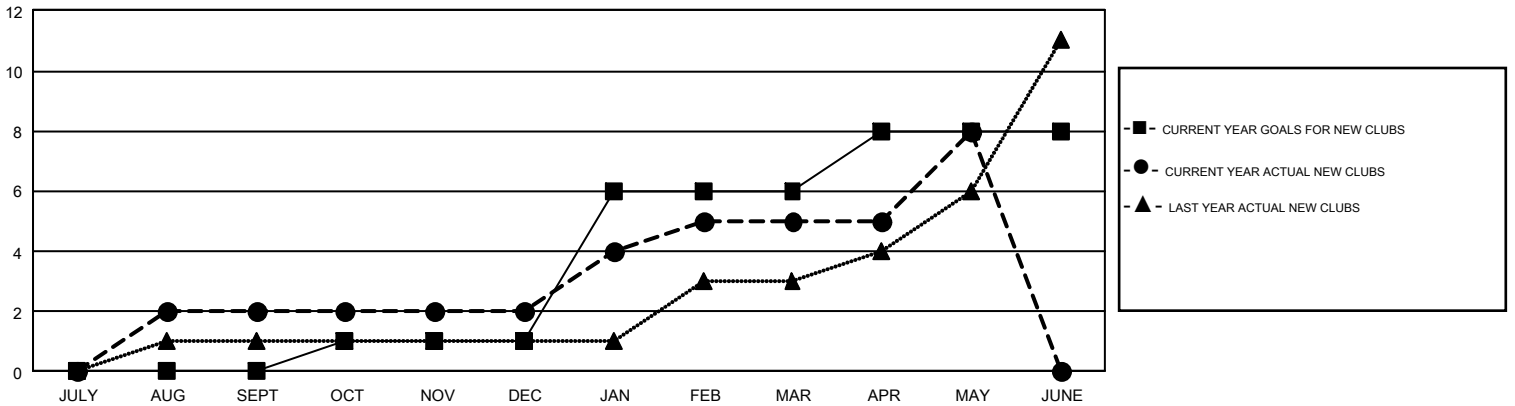
## GMT Constitutional Area 3, Group E

GMT: CARLOS ALMODOVAR

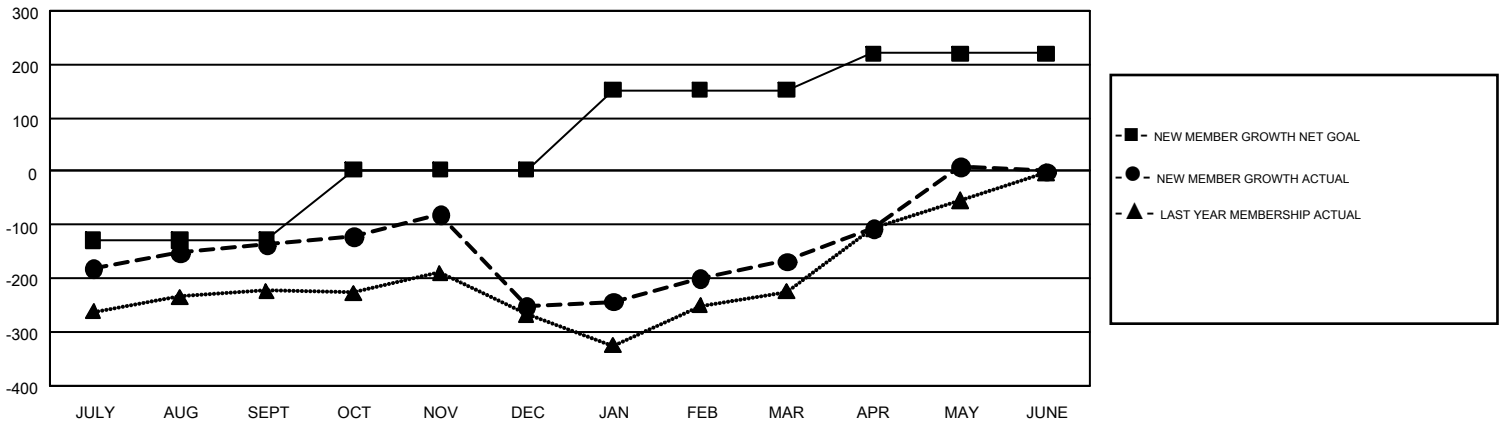
REPORT DOES NOT INCLUDE CLUBS IN UNDISTRICTED AREAS.

Clubs				Members			
RESULTS FOR 2016-2017				RESULTS FOR 2016-2017			
QUARTER	NEW CLUB GOAL	NEW CLUBS	DROPPED CLUBS	QUARTER	NEW MEMBER GROWTH NET GOAL (not reinstated or transfers)	NEW MEMBER GROWTH ACTUAL (not reinstated or transfers)	DROPPED MEMBERS ACTUAL (including transfers)
JULY/AUG/SEPT	0	2	1	JULY/AUG/SEPT	-128	201	339
OCT/NOV/DEC	1	0	7	OCT/NOV/DEC	131	208	322
JAN/FEB/MAR	5	3	3	JAN/FEB/MAR	149	282	197
APR/MAY/JUNE	2	3	0	APR/MAY/JUNE	68	277	101

GOALS AND ACTUAL NEW CLUBS CUMULATIVE



GOALS AND ACTUAL MEMBERS CUMULATIVE



DROPPED CLUBS: 11	181 CLUBS OF 289 ADDED 1 OR MORE NEW MEMBERS	<b>GENDER DISTRIBUTION</b> MALE 4,740 (56.49%) FEMALE 3,651 (43.51%)
<b>DROPPED MEMBERS</b> DECEASED 83 CLUB CANCELLED 148 OTHER 728 <b>TOTAL 959</b>	<a href="#">CLICK HERE FOR CUMULATIVE MEMBERSHIP DATA</a>	TOTAL FAMILY UNIT MEMBERS 1,970 FAMILY MEMBERS PAYING HALF DUES 1,100